



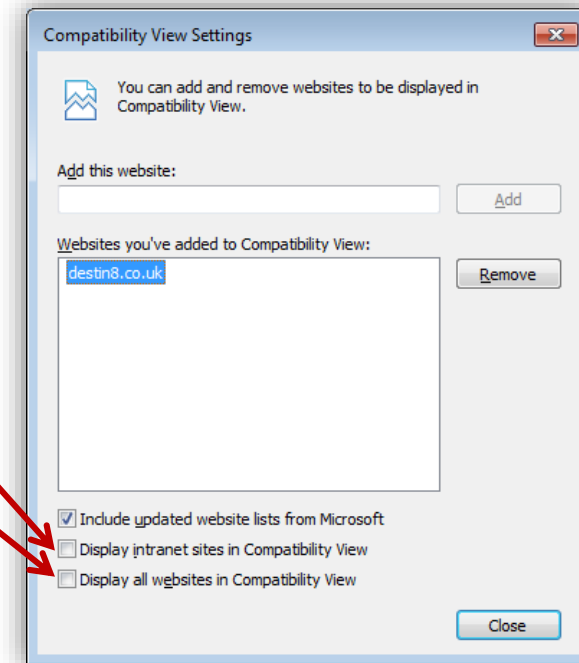
## Compatibility View

You can remove the Compatibility View via your browser 'Tools' tab and within the 'compatibility view settings'. Adjust accordingly to ensure that Destin8 is not a listed website.

Please also note that 'Display all websites in Compatibility View' should not be ticked. Similarly, if you have configured your Destin8 access as an Intranet site e.g. via a VPN or a fixed data circuit connection then you should ensure that the 'Display intranet sites in Compatibility View' is also not ticked. This applies to IE10 and below.



Function Key 12 is an alternative method to ensure that both your Browser and Document Modes are set correctly. We would recommend the Browser Mode to be set to your current browser version without Compatibility View and use 'Standards' as the default setting for the Document Mode.



## Destin8 Browser Support Update

We would also remind you of our earlier notification of the withdrawal of Destin8 support for the following browser versions with effect from April 2014:

- Internet Explorer – IE6 and IE7
- Mozilla Firefox – v12 and earlier
- Chrome – v23 and earlier

We appreciate that some of our users may still have one or more of these browser versions deployed and are perhaps reluctant to upgrade for a number of reasons. It is therefore important to consider the difference between "supported" and "will still work, but not supported". The current Destin8 GUI may still work on older browsers but we can only provide support on issues where your browser is newer than those listed above.

We would also point out that older and non-supported browsers may be a bigger security risk, particularly where they may have had support from the developer withdrawn i.e. by Microsoft, Google or Mozilla. To that end it is worth remembering that Microsoft ended technical support for Windows XP with effect from the 8th April 2014 and that this applies to IE6 and IE7 also.

Meanwhile if you require any further information or assistance on support issues then please do not hesitate to contact our Helpdesk on 01394 600205 or via e-mail to [help@destin8.co.uk](mailto:help@destin8.co.uk) in the first instance.

### **MCP plc – August 2014**

\*Features include automatic transitions plus new and modified screens where we cannot guarantee either consistency or static screen layouts; this may affect users who have implemented unsupported screen scraping applications.